

LO-TRAC[®] 100

Low-Speed Weigh-in-Motion & Axle-by-Axle Static Weighing System

System Description

The LO-TRAC 100 system provides a low cost means of measuring axle and gross weights for the purpose of vehicle weight restriction enforcement by Government authorities.



The electronic unit is rack mounted with all external cable connections neatly secured behind a lockable front panel. Convenient side panel connections are made to the operators control unit (OCU), ticket printer and a desktop computer.



Main Features:

- Slow Speed Weigh-in-Motion
- Static Axle-by-Axle Weighing
- Vehicle Classification with automatic comparison to pre-determined axle and gross vehicle weight limits
- Traffic Signal and/or Message Signboard Control
- Dedicated Operators Control Unit (OCU) with built-in keypad & display for system configuration and key switch for calibration
- Rack mounted unit with comprehensive transient and lightning protection
- LO-WEIGH 100 software with dedicated PC connection via Serial (RS232) connection
- Vehicle speed and change of speed check measurement to ensure accurate weight results
- RS485 data line connection for high speed weigh-in-motion pre-selection system connection
- RS485 connection for external weight display
- Video camera connection
- Over-height and/or over length detection
- Piezo electric and induction loop sensor connection for accurate vehicle classification and automatic traffic signal control
- Configurable alarm outputs

Technical Information

Accuracy Data (WIM & Static):

Gross Vehicle Weight	±2%
Individual Axle Weight	±2%
Group Axle Weight	±2%
Block Weight	±10kg
Speed	±5%
Speed Range	1 to 16 kph

Note: Vehicle and axle weight accuracy is dependant upon site construction in accordance to TDC specifications.

Classification Accuracy:

Rigid HGV	±99%
Articulated HGV	±99%
Draw-Bar Trailers	±99%

Electrical Connections:

External Cables	DIN Rail
Earthing	Common Earth Bolt
Weighbeam	Plug/Socket on WBTP PCB
Piezo Sensors	BNC Connectors
RS485 Data Line	Plug/Socket on DLTP PCB

Lightning & Transient Protection:

Mains Supply	Furse ESP
Weighbeam	TDC WBTP PCB
RS485	TDC DLTP PCB



Input/Output Ports:

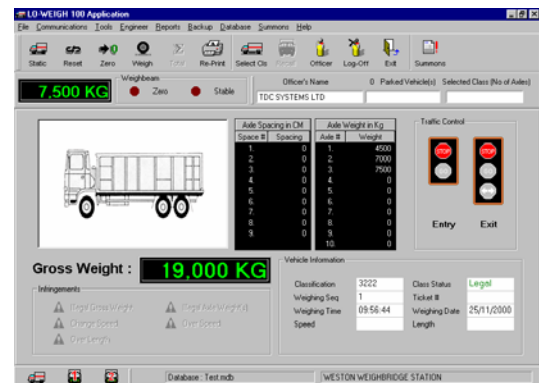
RS232	PC (Side Panel Mounted)
RS485	OCU (Side Panel Mounted)
RS232	Ticket Printer (Side Panel Mounted)
RS485	DIN Rail & DLTP PCB (HSWIM)
RS485	DIN Rail & DLTP (External Display)
Dry Contact	Six N.O. (Traffic Lights & Barrier)

Power:

85-264VAC @ 47-440Hz

Software:

LO-WEIGH 100 Compatible: Site Control, Weighing Operation Control, Data Recording, Report Generation & Diagnostics



Enforcement Station Installed Items:

WB30 Weighbeam, Traffic Lights, Message Sign Boards, Traffic Barriers, Induction Loop Sensors, Piezo Electric Sensors



Dimensions & Weight:

LO-TRAC 100 Unit:	480 x 280 x 180mm (w d h)
Rack Unit	650 x 550 x 750mm (w d h)
	8 kg

Shipping Dimensions & Weight:

	650 x 750 x 1000mm (w d h)
	65 kg (complete in rack)



58 Buckingham Road
Weston Industrial Estate
Weston-Super-Mare
North Somerset BS24 9BG
England

Tel: +44 (0)1934 644299
Fax: +44 (0)1934 644255
Email: sales@tdcsystems.co.uk
www.tdcsystems.co.uk

