



PORTABLE WEIGH IN MOTION SYSTEM

Portable vehicle weighing solutions suitable for weighing vehicles either in motion (WIM) at low speeds (5 kph) or statically (axle-by-axle). The CET 10-4 SLIM has a weighing range of up to 30 000 kg / 20 kg per axle.

Achievable accuracy when the scale is set on a flat good quality surface is in the order of $\pm 0.5\%$ for static weighing and $\pm 2\%$ for low speed weigh-in-motion.

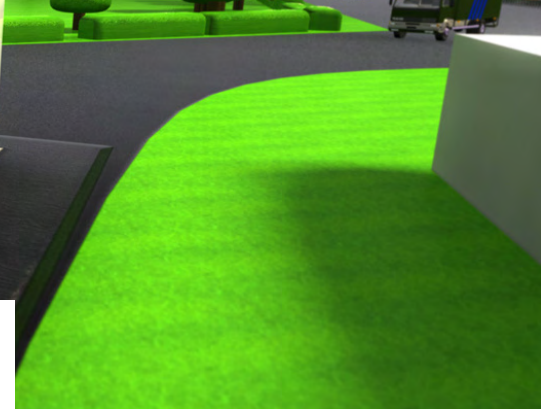
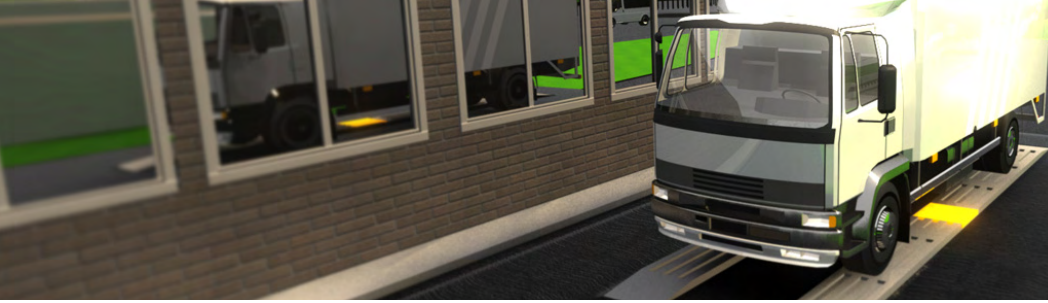
The weigh pads are mechanically strong in that they are built using high resistance aluminium; avionics grade, alloy and coated with anti-skating polyurethane paint.

The weigh pads are low profile and small in size (640 x 500 x 40 mm) and weigh only 24 kg.

Four stainless steel strain gauges load cells hermetically sealed and protected to IP 67 are connected to a junction box and data transmission is via a cable connected with a quick release connector. Load cells CPA SL are approved to OIML R60.

FEATURES

- **Low speed weigh in motion to $\pm 2\%$ accuracy for statistical and enforcement purposes**
- **Static (axle by axle) weighing to $\pm 0.5\%$ accuracy (of full scale) for statistical and enforcement purposes**
- **Ease of use and extremely portable; can be transported to areas where there are no other means of weighing vehicles. Battery powered with long operational use**
- **Bespoke software to download collected vehicle data for further analysis and report generation**



CAPTELS CET10-4 SLIM PORTABLE WEIGH IN MOTION SYSTEM

TECHNICAL INFORMATION

WEIGH PADS

Load Cells: 4 Stainless Steel cells per pad
 Load Cell Protection: Hermetically sealed to IP67
 Weighing Range: 30,000 kg / 20 kg per axle
 Pad Material: Avionics grade aluminium
 Pad Protection: Anti-skid polyurethane paint
 Dimensions: 640 x 500 x 40mm (height)
 Weight: 24 kg
 Cables: 10m or 20m

ACCURACY

Static Weighing: ±0.5% of Full Scale
 Weigh-in-Motion: ±2%

Note: Quoted accuracy only achievable when weigh pads are set on a good quality; flat, surface and levelling tracks deployed.

UCC WIM ELECTRONIC UNIT

Dimension: 510 x 300 x 210 mm
 Weight: 10 kg Internal battery External 8 – 17v
 Power: DC AC Mains 230v

Note: The UCC electronic unit requires a computer connected with SAGES software.

VPR WIM ELECTRONIC UNIT

Dimension: 490 x 195 x 395 mm
 Weight: 13 kg
 Display: 5 digit high contrast LCD
 Printer: Built-in ticket printer
 Power: Internal battery
 External 8 – 17v DC AC Mains 230v

Note: The VPR electronic unit is a standalone unit with built-in display and printer.



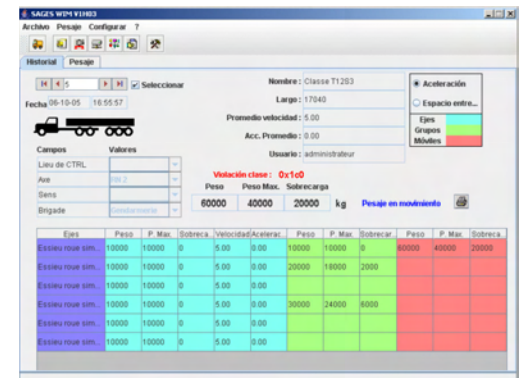
URS is a member of Registrar of Standards (Holding) Ltd.

SOFTWARE

Weigh-in-Motion software designed for data processing, data acquisition & weighing management files.

Customisable vehicle classification definitions (local vehicles types, dimensions and legal weights).

Data export in text format (.csv) compatible with Excel and Access.



CONTACT US

TDC Systems Ltd.
 30 Lynx Crescent
 Weston Industrial Estate
 Weston-super-Mare
 North Somerset
 BS24 9BP
 England
 United Kingdom

T: +44 (0)1934 644299
 F: + 44 (0)1934 644255
 E: sales@tdcsystems.co.uk

www.tdcsystems.co.uk

